

Dr. Michael Norbury, VC SMD

VC Update

- Family Physician – Raven Song Primary Care Clinic
- Senior Medical Director – Vancouver Community, VCH
- Clinical Assistant Professor – Department of Family Medicine , UBC



Vancouver Community within VCH

Vancouver is one of three communities of care (CoC) within VCH

The three CoCs are:

- *Vancouver*
 - Vancouver Acute (VA) and Vancouver Community (VC)
- *Richmond*
- *Coastal*

Vancouver Community of Care (COC)

VA & VC:

- Budget FY23: \$1.35 billion
- FTE: 7,484
- Medical staff: 2,815

Vancouver Acute (VA)

Vancouver Acute is made up of:

- *Vancouver General Hospital (VGH)*
- *GF Strong Rehabilitation Centre*
- *UBC Hospital*

Budget FY23: \$622.6 million

FTE: 4,169

Medical staff: 2,252

Vancouver Community (VC)

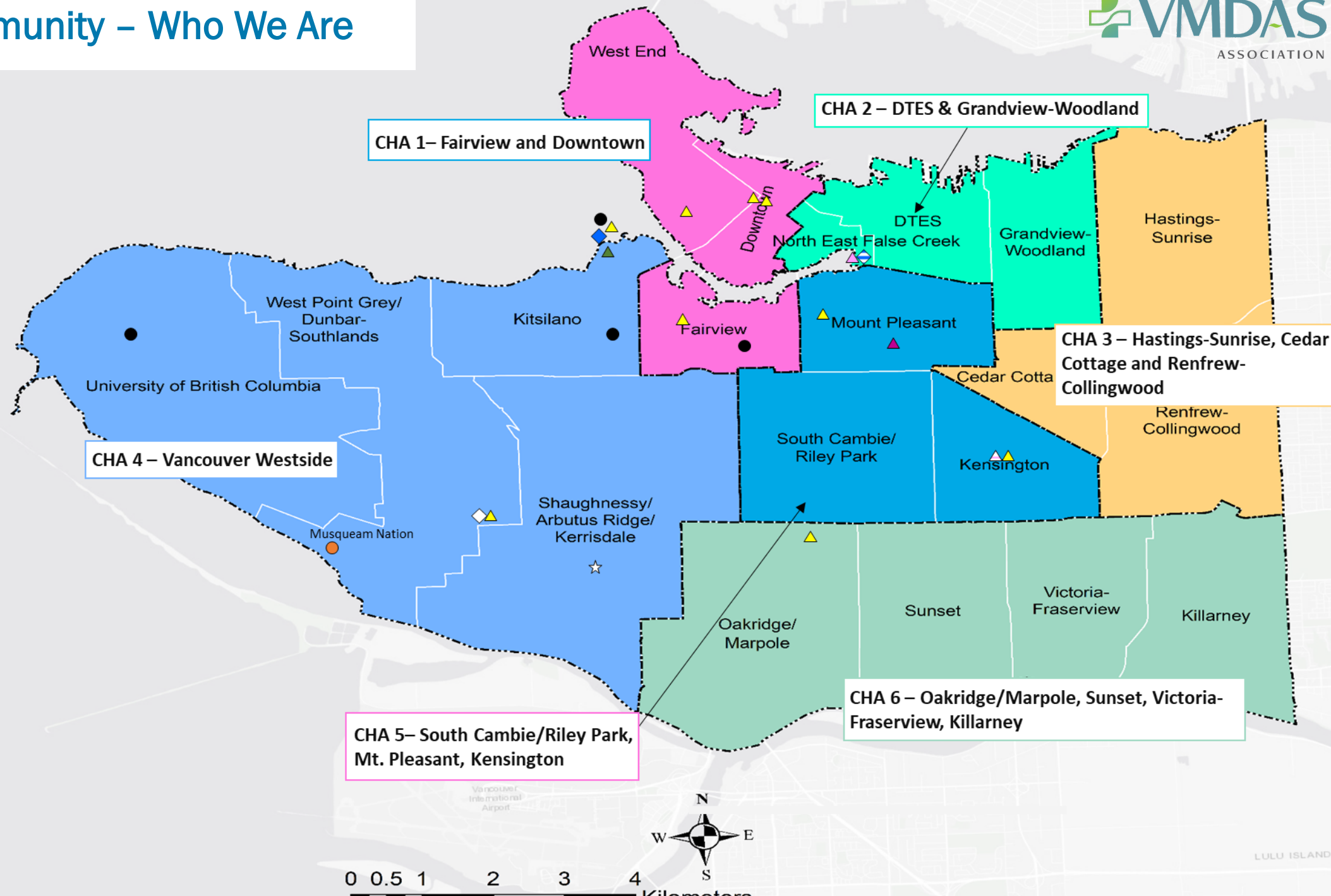
Vancouver Community is responsible for the delivery of health authority community-based services, which can be both episodic or longitudinal, across a range of program & clinical areas, for the 680,860 population of Vancouver.

Budget FY23: \$726.8 million

FTE: 3, 315

Medical staff: 563

Vancouver Community – Who We Are



Leaders in Vancouver Community



Bob Chapman

Vice President, Vancouver Community



Lizzy Ambler

Director for CHA 6; Program Lead, Adult Mental Health and Substance Use; Child & Youth Mental Health and Substance Use



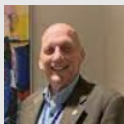
Michelle Baker

Director Transition Services



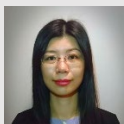
Lori Benning

Director of Strategy Deployment, Vancouver



Robert Bush

Director Mental Health and Substance Use: Acute, Urgent and STAT Centre



Heidi Cheung

Director of Capital Projects, Vancouver Community



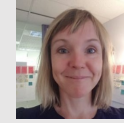
Andrew Day

Director and Program Lead, Primary Care & UPCC's



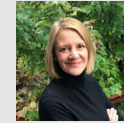
Braden Davie

Director, Professional Practice, Nursing and Allied Health



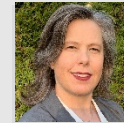
Caitlin Etherington

Director and Program Lead, Supported Housing and Complex Rehab



Kristen Farquharson

Director for CHA 1 and Program Lead, Older Adult Mental Health



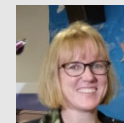
Jenny Hamilton Harding

Director for CHA 3



Nellie Hariri

Director for CHA 4; Program Lead, Home Health, Home Support and Palliative Services



Sarah Jordan

Director and Program Lead, Long-Term Care and Assisted Living



Andrew MacFarlane

Director and Program Lead, Tertiary Mental Health and Substance Use



Jaime May

Interim Director, Financial Planning & Business Support



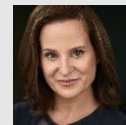
Tarnjit McCauley

Director CHA 5



Steph Partridge

Director for CHA 2 & Program Lead, Addictions



Tristin Wayte

Director, Client Relations & Risk Management



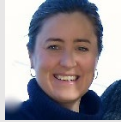
Bonnie Wilson

Director Regional Operations for COVID-19
Vaccination and Testing at VCH



Dr. Mike Norbury

Senior Medical Director, Vancouver Community



Angela Remocker

Medical Director, Urgent and Primary Care Centres; Interim Medical Director for Primary Care Networks



Dr. David Hall

Department Head, Family and Community Practice



Dr. Cass Djurfors

Medical Director, Primary Care Program



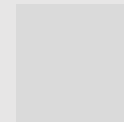
Dr. Vandas Yousefi

Associate Department Head, Family & Community Practice



Dr. Marla Gordon

Medical Director, Long-Term Care & Community Geriatrics



TBD

Medical Director, Addiction Program



Dr. Nori MacGowan

Medical Director, Palliative Care Program



Dr. Randall White

Medical Director, Mental Health & Substance Use Program

Vancouver Community – Major Program Areas



Long -Term Care



MHSU



Supported Housing &
Complex Rehab



Addictions



Home Support



Community Geriatrics



Palliative/EOL Care



Home Health



Primary Care



UPCC/PCN

Vancouver Community – Major Program Areas



Long -Term Care



Long-Term Care

- 32 long term care sites
- 3,691 long term care beds in VC
- 7 sites VC-owned and operated = 1,024 beds



Addictions



Palliative/EOL Care



Primary Care



MHSU



Home Support



Home Health



UPCC/PCN

Vancouver Community – Major Program Areas



Long-Term Care



Addictions



Palliative/EOL Care



Primary Care

Addictions

- Withdrawal Management (detox) centres (54 VC-based beds)
- Community Transitional Care Team (9 beds)
- DTES Connections (opioid agonist therapy clinic)
- Support recovery & stabilization beds (96 VC-based contracted beds)



MHSU



Home Support



Home Health



UPCC/PCN

Vancouver Community – Major Program Areas



Long-Term Care



Addictions



Palliative/EOL Care



Primary Care



MHSU



Home Support



Home Health



UPCC/PCN

Palliative/EOL Care

- Support palliative care in peoples' homes
- Support palliative care in long term care
- 4 VC-based hospices- 38 beds (410 clients/year)
- Nancy Chan Ambulatory Palliative Care Clinic

Vancouver Community – Major Program Areas



Long-Term Care



Addictions



Palliative/EOL Care



Primary Care



Primary Care

• 6 owned and operated primary care clinics providing care to complex & marginalized clients:

- DCHC
- Pender
- Heatley
- Raven Song
- Three Bridges
- Sheway



MHSU



Home Support

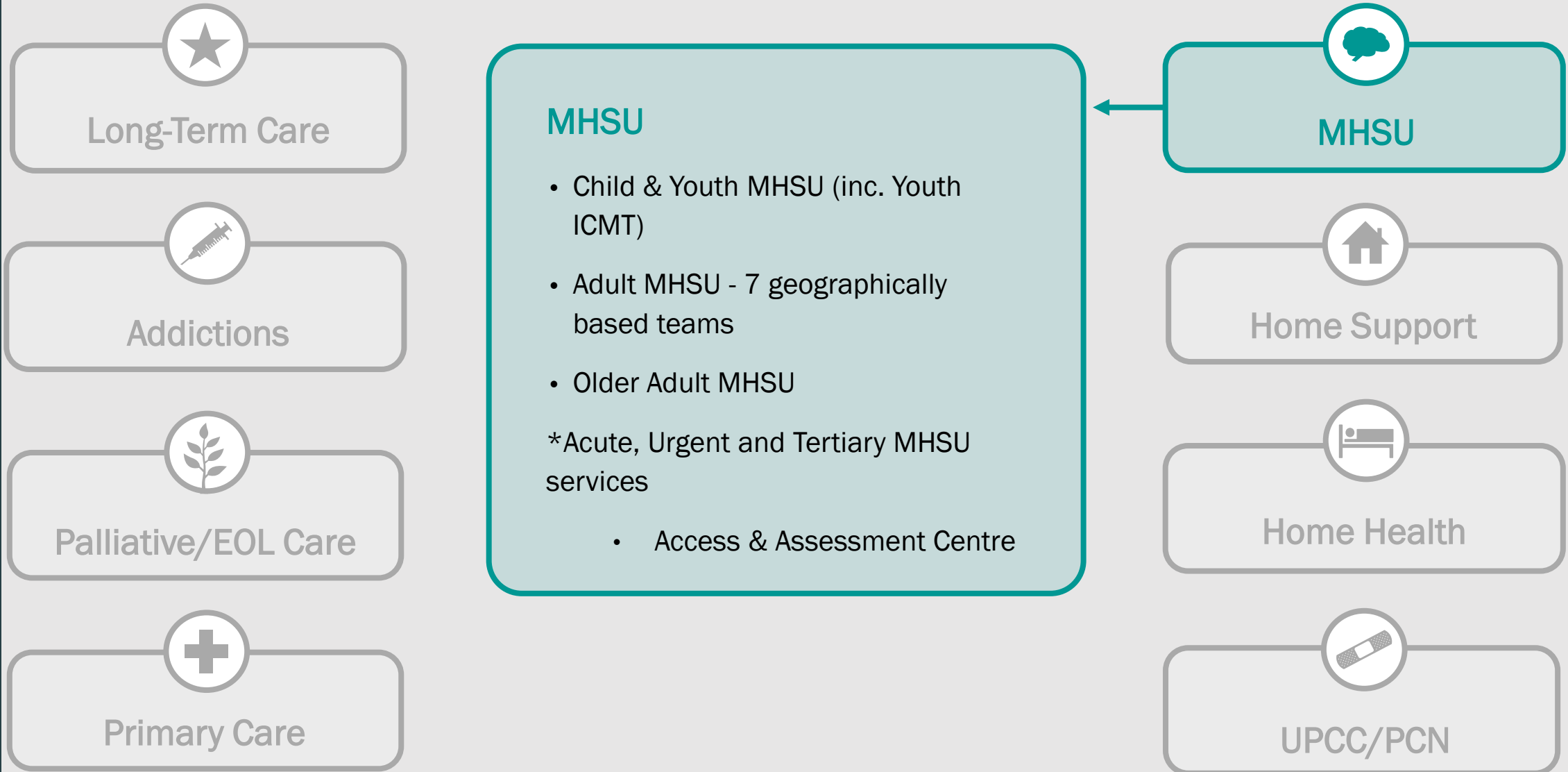


Home Health



UPCC/PCN

Vancouver Community – Major Program Areas



Vancouver Community – Major Program Areas



Long-Term Care



Addictions



Palliative/EOL Care



Primary Care



MHSU



Home Support



Home Health



UPCC/PCN

Home Support

- Around 5,100 Home Support visits everyday across VC
 - Bathing & Dressing
 - Meal support
 - Medication assistance
 - Mobility assistance

Vancouver Community – Major Program Areas



Long-Term Care



Addictions



Palliative/EOL Care



Primary Care



MHSU



Home Support



Home Health



UPCC/PCN

Home Health

- Around 550 Home Health Nursing visits everyday in VC
- Nursing care (inc. palliative) and other services in an interdisciplinary team (OT/PT/dietician)

Vancouver Community – Major Program Areas



Long-Term Care



Addictions



Palliative/EOL Care



Primary Care



MHSU



Home Support



Home Health



UPCC/PCN

UPCC/PCN

- Currently 4 UPCCs in VC
- PCNs are 6 team-based care networks in development
- PCNs consist of inter-professional teams: RNs, clinical counsellors, social workers, pharmacists, dietitians, OTs

Vancouver Community – Major Program Areas



Supported Housing &
Complex Rehab

Supported Housing & Complex
Rehab

- 1,600 MHSU Supported Housing beds
- 160 Supported Housing beds for people with disabilities
-
- 5 teams supporting housing access & retention



Community Geriatrics

Vancouver Community – Major Program Areas



Supported Housing &
Complex Rehab

Community Geriatrics

- 17 short term assessment & treatment (STAT) centre beds (UBC)
- Medical Day Program (UBC)



Community Geriatrics

Vancouver Community – Medical Staff Challenges



Long -Term Care



MHSU



Addictions



UPCC/PCN



Palliative/EOL Care



Community Geriatrics



Primary Care